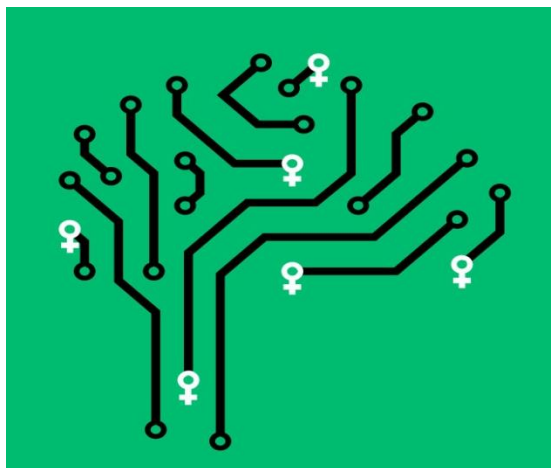


Women in Artificial Intelligence (AI) to Mitigate the Gender Gap

In the field of science and technology (S&T) although much have been done to reduce gender disparity, however, more needs to be done to create a balance for better scientific outcomes. According to the World Economic Forum report, only 22% AI professionals are females throughout the world. Despite critical demand for AI skilled professionals, the absence of women in such areas have created a need for encouraging women to participate in AI systems. The AI systems are machines or agents capable of observing their environment and taking actions towards a certain goal.



Women in Artificial Intelligence

The scarcity of women among machine learning researchers is hardly surprising and the wider fields of computer sciences are dominated by men. While women have made incredible breakthroughs in S&T for centuries, they are often unknown to the world of AI, and are honored retrospectively. In developed countries, the exclusion of women from the design and development has produced AI capacity with limited capacity. According to a global study, only 27% of Indian women are in workforce, however, they have a higher-than-average share (22%) in artificial intelligence skill sets as compared to other countries. The Department of Biotechnology (DBT), Government of India, has taken initiatives to increase the participation of women in emerging scientific fields such as artificial intelligence, 3D printing, Internet of

Things, cyber security, robotics etc. More gender sensitive technologies need to be developed such as sociable robots with ambient intelligence that incorporates 'social' and 'emotional' learning.

Certain companies are also implementing their own programs to deal with gender inequality. The information and technology companies act as a computer programming boot camp specifically for women developers and help them in join the increasing technical workforce.

Dr. Bilqeesa Bhat
Project Scientist,
bhat.bilqeesa3000@gmail.com