

Super Cyclone Amphan rolling towards West Bengal and Odisha

Mohammad Faiyaz Anwar

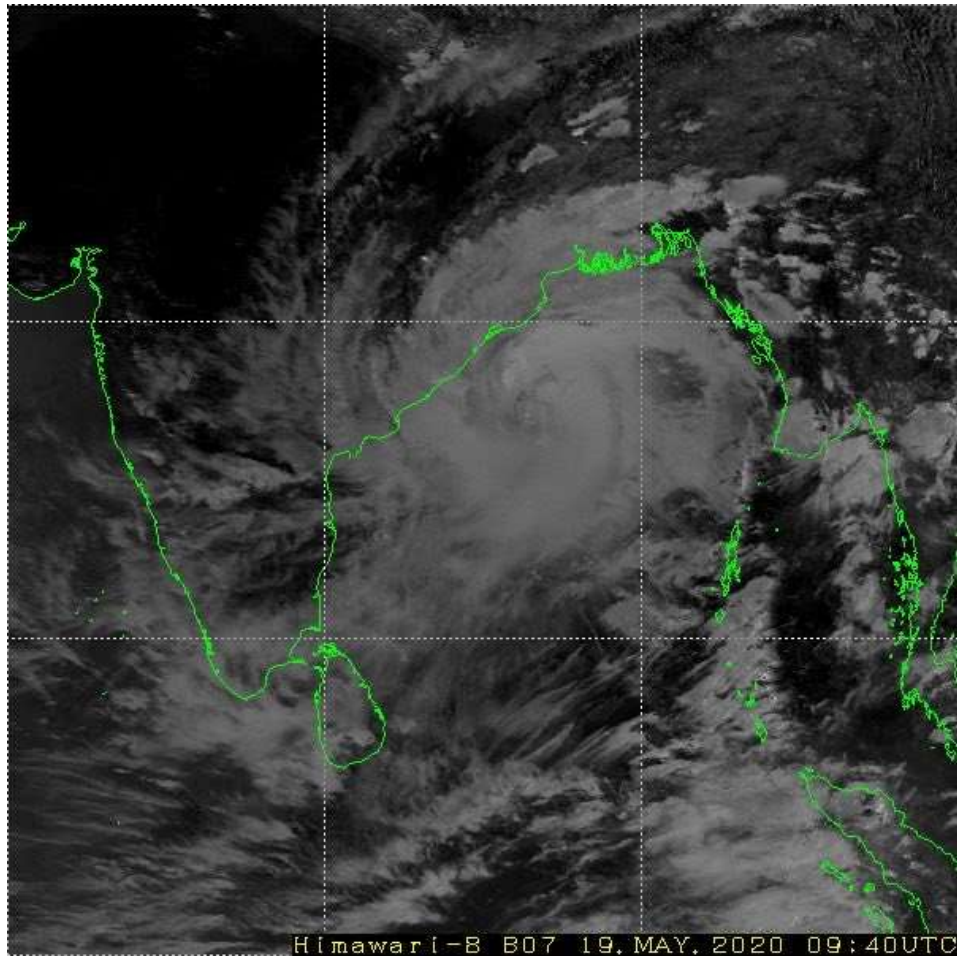
As per the latest weather forecast issued by India Meteorology Department (IMD)'s National Weather Forecasting Centre, India Meteorological Department (IMD), Gangetic West Bengal and North Coastal Odisha to witness very heavy to extremely heavy rainfall from May 19 onward. The IMD also issued an orange alert for the West Bengal and Odisha coasts warning possibility of widespread damage in Kolkata, Hooghly, Howrah, South and North 24 Parganas, and East Midnapore districts due to cyclone Amphan. 3 lakh people have been already evacuated from three West Bengal districts. As per an IMD tweet released today at 16:26 hrs IST, *"Super Cyclone AMPHAN to cross West Bengal – Bangladesh coasts between Digha (West Bengal) and Hatiya Islands (Bangladesh) close to Sundarbans during afternoon to evening of 20th May 2020 with wind speed of 155-165 kmph gusting to 185 kmph."*

As of 15:10 PM today (19 May, 2020) Super Cyclone Amphan was located at 17 degree North Latitude and 86.45 degrees East Longitude, i.e. 320 km from Puri, 450 km from Bhadrak and 525 km from Digha, Bengal. The super cyclone 'Amphan' is now rolling towards the Indian shores in West Bengal and Odisha with extremely severe cyclonic storm over the west-central Bay of Bengal on Tuesday afternoon.

The super cyclone prediction simulation can be accessed at: https://twitter.com/achyuta_samanta/status/1261614821918814209?s=20

. Prime Minister Narendra Modi chaired an emergency meeting of the National Disaster Management Authority (NDMA) along with Union Home Minister Amit Shah and other top government officials in New Delhi on Monday to discuss emergency mitigation measures. PM Modi assured all possible central assistance to the cyclone-affected states.

Latest weather advisory and information related to super cyclone Amphan can be accessed at: https://mausam.imd.gov.in/imd_latest/contents/cyclone.php



Satellite Imagery of Super Cyclone Amphan at 09:40 UTC

